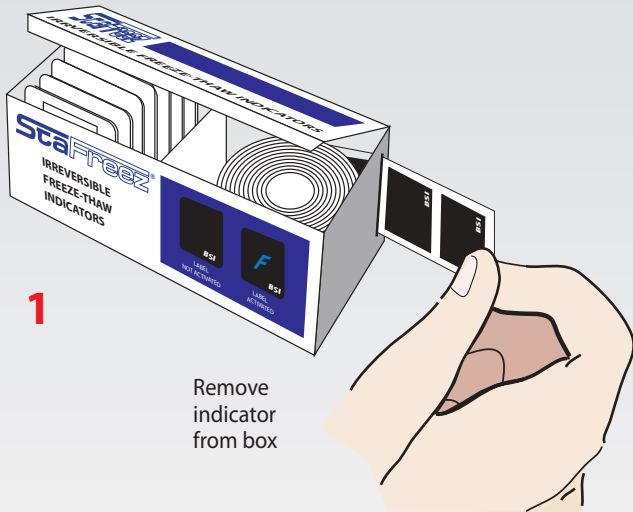


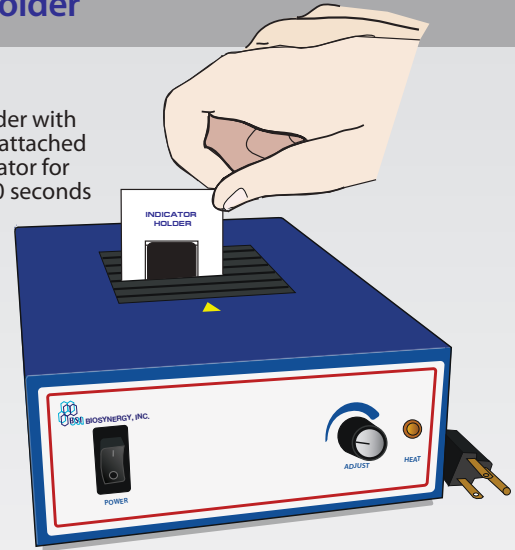
Directions for using the indicator holder



1

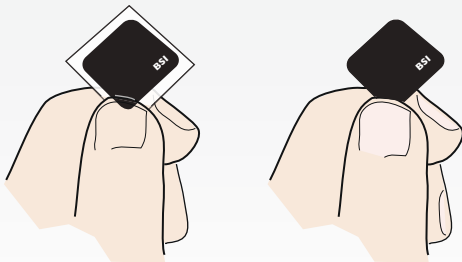
Remove indicator from box

4 Place holder with indicator attached into activator for at least 60 seconds



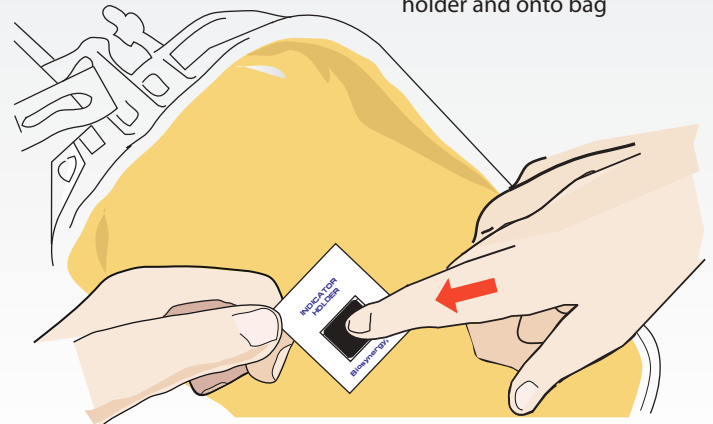
2

Place thumb under indicator and remove protective backing



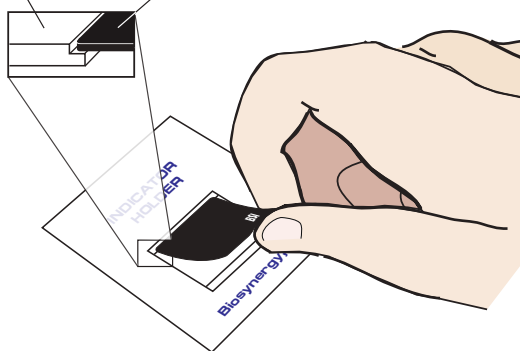
5

Hold indicator over bag and press activated indicator through holder and onto bag



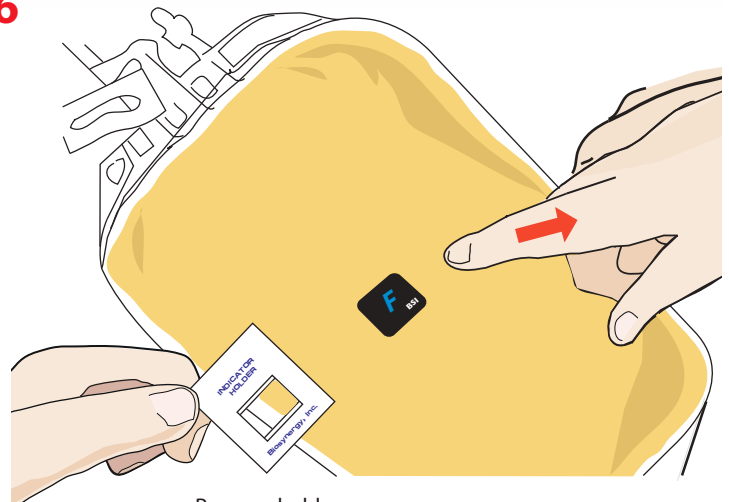
3

Holder Indicator



Gently place indicator onto holder

6



Remove holder. Indicator has been activated and pressed onto bag

